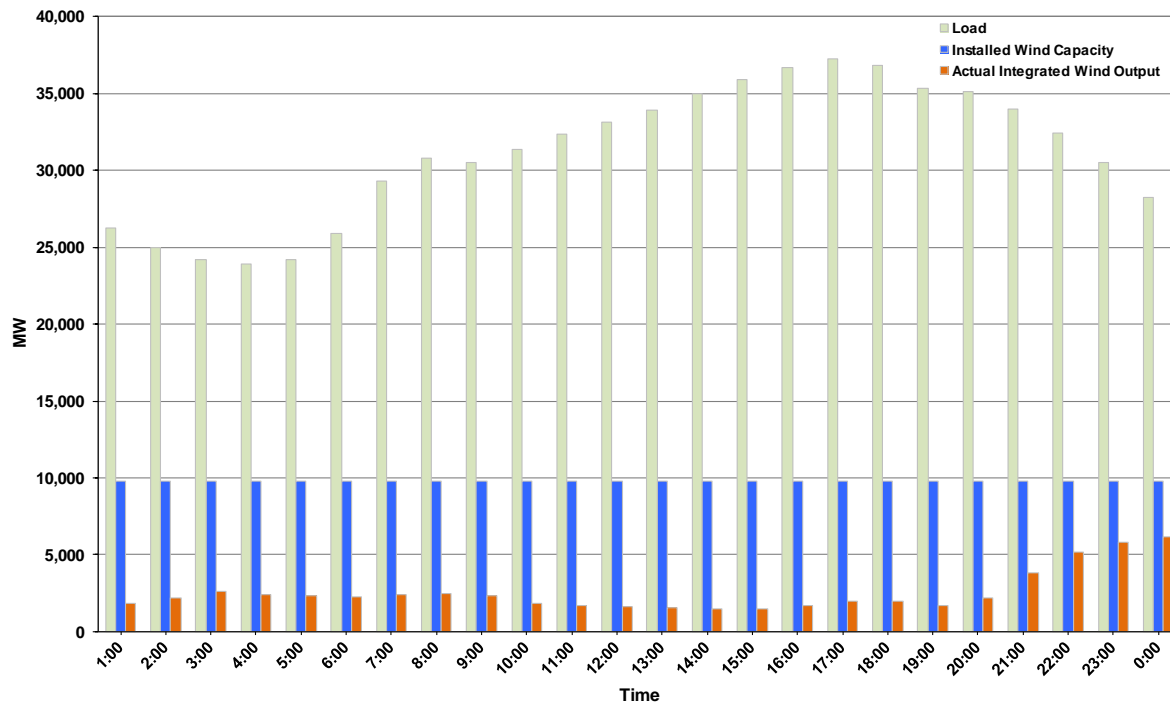




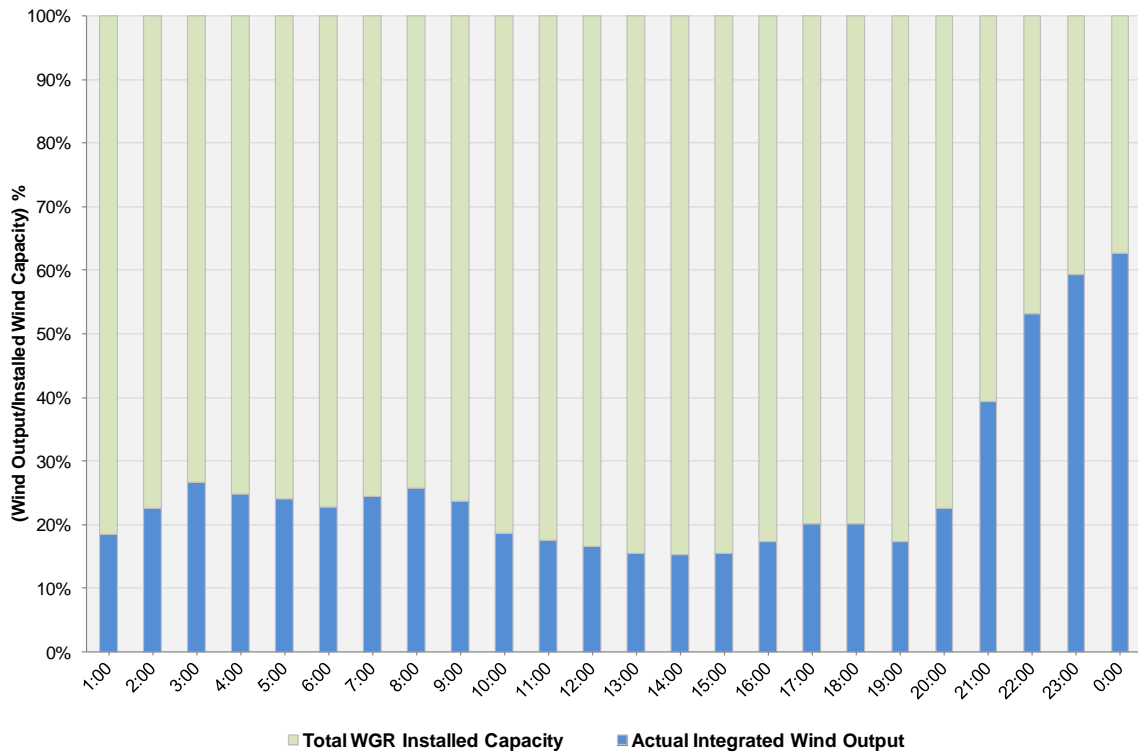
ERCOT Grid Operations Wind Integration Report: 10/19/2012

Peak Load	37,263 MW
Load Peak Hour (HE)	17
Wind over Peak	1,972 MW
Wind Record 06/19/12	8,368 MW
Max Wind Value	6,416 MW
Wind Peak Time	23:59
Wind Integration %	23.61%

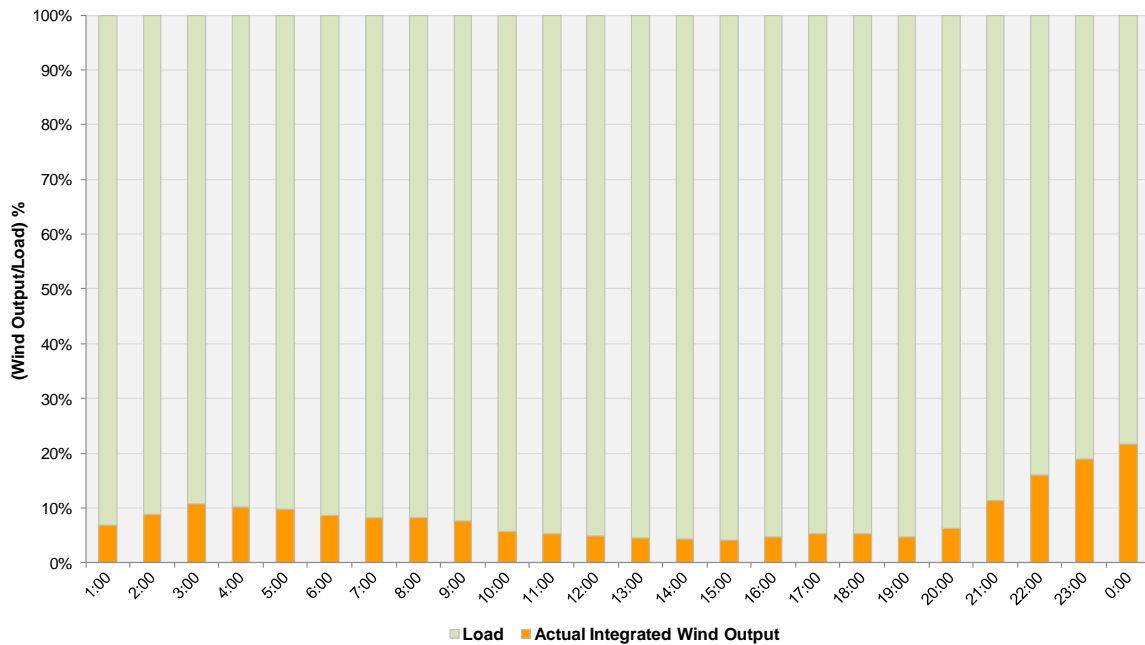
**Hourly Average Actual Load vs. Actual Wind Output
10-19-2012**



Actual Wind Output as a Percentage of the Total Installed Wind Capacity
10-19-2012



Actual Wind Output as a Percentage of the ERCOT Load
10-19-2012



ERCOT Load vs. Actual Wind Output 10/12/2012 - 10/19/2012

